

Communications & Power Industries Helix Traveling Wave Tube



Custom configurations are also available. These variations in the performance and configuration include:

- mechanical configurations
- electrical and RF connections
- dual-stage depressed collector

FEATURES:

- 125 W
- 13.75 - 14.5 GHz
- PPM focused
- Coaxial input
- WR 75 output
- Conduction cooled

APPLICATIONS:

- XXXXXXXXXXXXXXXX

	Frequency (GHz)	Power output (min)
VTU-6125C4	13.75 - 14.5	125 W

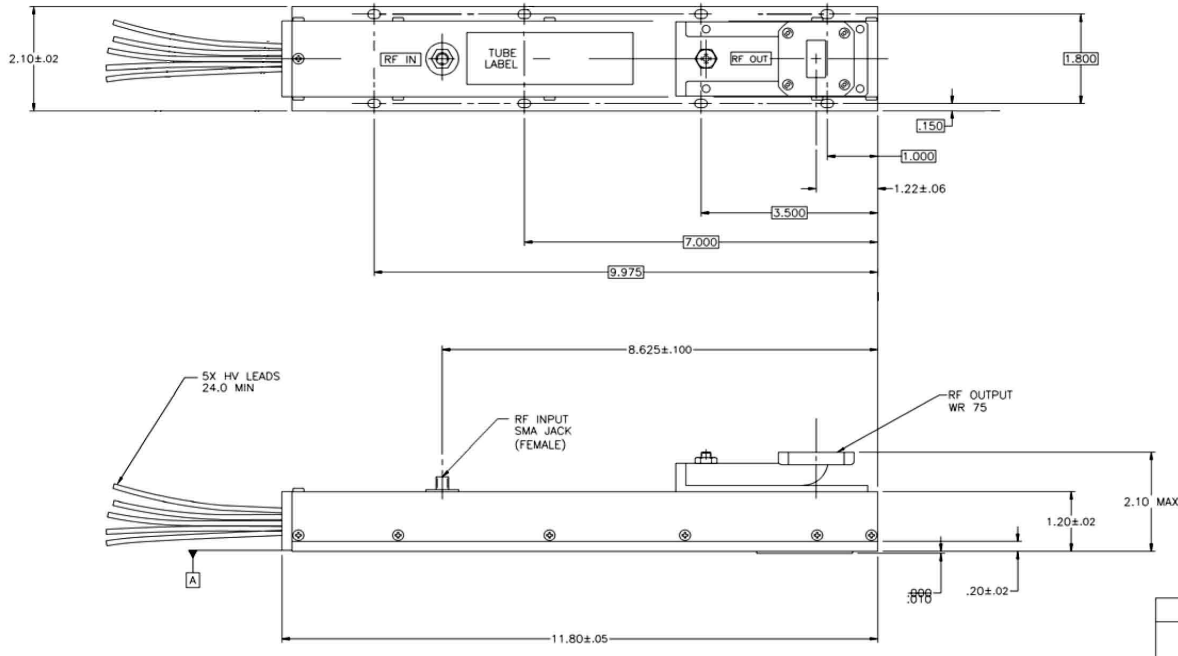
With a history of producing high quality products, we can help you with your Helix TWT.

Contact us at MPPMarketing@cpii.com or call us at +1 650-846-2800.

Typical Operating Parameters

	Minimum	Maximum	Typical	Units
Heater voltage	5.7	6.3	6.0	Vdc
Heater surge current	---	5.0	---	A
Helix voltage	4.8	5.2	5.0	kVdc
Helix current	---	12.0	---	mAdc
Collector voltage	4.2	5.0	---	kVdc
Cathode current	170	220	---	mAdc
Heater warm-up time	3.0	---	---	minutes
Drive power	---	100	---	mW
Prime power	---	500	450	W
Load VSWR	---	2.0:1	---	VSWR

CPI CW Helix Traveling Wave Tube: VTU-6125C4



DANGER
 CONTAINS BERYLLIUM
 MAY CAUSE CANCER
 CAUSES DAMAGE TO LUNGS
 AVOID CREATING DUST
 DO NOT GET ON SKIN
 PER M30-12 and SWPGEN-09

LEAD CONNECTIONS	
GROUND	BLACK
COLLECTOR	RED
HEATER	BROWN
HTR-CATH	YELLOW
THERMALSWITCH	GREEN

The data should be used for basic information only. Formal, controlled specifications may be obtained from CPI for use in equipment design.



Microwave Power Products Division
 811 Hansen Way
 Palo Alto, California
 USA 94304

tel +1 650-846-2800
 email MPPMarketing@cpii.com
 web www.cpii.com/MPP

For more detailed information, please refer to the corresponding CPI technical description if one has been published, or contact CPI. Specifications may change without notice as a result of additional data or product refinement. Please contact CPI before using this information for system design.

©2020 Communications & Power Industries LLC. Company proprietary; use and reproduction is strictly prohibited without written authorization from CPI.